



STEP INSIDE THIS HOME!

MAKING SCENTS

You're invited to soak up the sunshine in this bright and calming family bungalow, minutes from Sydney's Bondi Beach

WORDS SOPHIE KNOX STYLING JASON GRANT PHOTOGRAPHY LAUREN BAMFORD



ARTWORK (THIS PAGE) MATTHEW JOHNSON (OPPOSITE) ROBERT HOLLINGWORTH

CHEAT SHEET

Who lives here: Belinda Everingham, owner and creator of Bondi Wash, a collection of natural household products derived from the Australian bush; her husband, Peter, business manager; their children, Jemma, 15; Sascha, 12; and Harley, 9; and their spoodle, Roger.

Style of home: A 1930s Californian bungalow, which has been converted to a four-bedroom house with a study, a landscaped garden and a pool.

\$\$\$ The renovation cost came to more than \$350,000.



OPEN-PLAN LIVING/DINING Owners Belinda and Peter have given the new living/dining area in their Bondi home modern Australian appeal. In the dining zone (**opposite**), natives sit next to capiz striped votives and a tarnished metallic vase, all from Zanui. The sofas and coffee table from Jardan (**this page**) are grounded by a graphic, tactile Dinosaur Designs rug from Designer Rugs.



The persuasive power of an odour cannot be fended off, it enters into us like breath into our lungs, it fills us up, imbues us totally." This line from Patrick Süskind's 1985 novel *Perfume* says something about the way fragrance has affected Belinda Everingham. It was while reading this book that she was propelled into the world of Australian native plants, spurred on by the tale of a Frenchman who navigated life by the power of his nose.

Before life was invigorated with native scents, Belinda and her husband Peter undertook a major renovation of their Bondi house, re-sculpting the Californian bungalow from a dim three-bedder into an exceptionally Australian expression of the family home.

The couple purchased the house in 2006, with the intention to make renovation plans and rent it out while the pair and their children Jemma, Sascha and Harley, lived in Melbourne for five years. On their return, Belinda and Peter engaged architect Nadine Alwill to guide them through the renovation, including reworking the back half of the house to create an open living/kitchen and dining area, and adding a second storey as a parents' retreat.

One year later, after colourful negotiations with neighbours, the plans were approved and builder John Oxley began construction. At the start of 2012, the Everinghams moved in and their home suits the busy and loving lifestyle of a family of five.

"We've had a lot of neighbours tell us that they love the renovation because it's in keeping with the style of Bondi," says Belinda. Rendering and a lick of paint are the only major variations to the facade. The front door is a soft sky blue, signalling the first of many nods to beachside living. This first half of the house has remained, with the living room now a hangout zone for the kids. On one side of the hallway are the children's bedrooms, the first of which features a calming ensuite with a high ceiling.



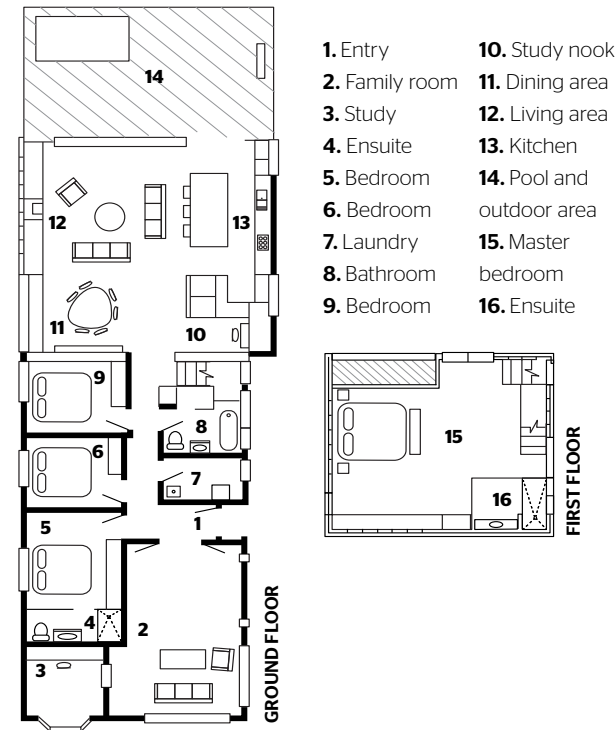
DINING AREA (opposite) As luck would have it, owner Belinda bought the seven chairs from Ke-Zu months before she found the B&B Italia 'The Seven' dining table. **LIVING AREA (above)** Roger the spoodle settles into cushions from Zanui. **KITCHEN (below)** Timber bowls and an olive-green vase from Zanui echo the zone's organic tones.



ARTWORK (OPPOSITE) MATTHEW JOHNSON. GEORGE NELSON 'BUBBLE' LAMPS, AVAILABLE FROM SPENCE & LYDA, SPENCEANDLYDA.COM.AU

TIMELINE

2006	2007	2010	2011
Property is purchased - Belinda and her family then move to Melbourne, so the house is rented out.	Engage landscape designer William Dangar and architect Nadine Alwill to develop sketch plans. Plans take six months to get through council.	The family move back to Sydney by the end of the year and rent nearby to supervise construction.	Work begins mid-2011. Demolition and pool dig is followed by pouring the foundations. Building work takes only six months. Move back in Jan 2012.



“This is my favourite bathroom, it is so tranquil,” says Belinda. The small, white Argentinian glass wall tiles go on forever, reaching up to the towering skylight. Despite the house’s three bathrooms featuring the same glass tiles, each takes on different hues of the ocean, sometimes pale sea green, other times pearlescent grey, depending on the light.

On the right of the hallway is a new laundry with a door, that leads out to the washing line. “It was originally a bathroom that we turned into a laundry – the bath was orange and the tiles were ’70s-style brown Coca Cola-bottle,” recalls Belinda. “It was so bad that it was almost good.” Then comes the main bathroom, which is like stepping onto the shores of Bondi Beach. The Stone Italiana ‘Jaipur’ quartz stone surface that borders the bath and vanity is pale sand in colour and slightly rough to the touch. Sitting in the corner is a proud bunch of green gum leaves, reminiscent of the patches of growth that stand guard at the edge of Aussie beaches.

Stepping down from the hall, the expansive new kitchen and living area is liberating. “This is my favourite part of the house – I find it incredibly uplifting,” says Belinda. Circling the boundary of the high ceiling is a tidy row of rectangular glass louvres that brings light and air into the space. The American oak floorboards are softened by a layer of lime wash, almost disappearing like the white walls and the soft pale cabinetry throughout. The kitchen is functional and refined, with the same quartz stone surface as the bathroom’s grounding the galley bench.

Walls and shelves get a personality hit with Australian art, from Matthew Johnson and Robert Hollingworth paintings to sculptures by Stephen Ormandy and Kendal Murray. Belinda’s affection for natives is on show, with displays of wattle, banksia and gum.

Her love of natives grew from a light-bulb moment while reading *Perfume* three years ago. “I was struck by the fact that the French have been making use of their natives for centuries. Why can’t we do the same?” she says. Wanting to use fewer chemicals, Belinda began blending essential oils to produce products that



MASTER BEDROOM (opposite & above) This neutral-toned and calm space showcases form with the Moller ‘#63’ bench from Great Dane and the ‘Paloma’ table lamp, Xavier & Me cushion and Sheridan ‘Abbotsdon’ quilted bedcover, all from Zanui. **ENSUITE (below)** The Licht pendant light from Koskela gives a hint of sky blue to this elegant pamper zone with the tapware and basin from Reece and a Carrara marble benchtop.



ARTWORK (OPPOSITE) SOPHIA SZILAGYI



BATHROOM (above) One of the naturally scented products in Belinda's Bondi Wash range. **OUTDOORS (opposite)** The pool sits where a garage once was - "I sold the garage door so it didn't add to landfill," says Belinda. "We use the garden all the time. It's a fragrant garden, with a mix of natives and non-natives - frangipani, gardenia, giant ginger, lilly pilly and banksia."

showcase the beauty and antibacterial qualities of Australian natives. Bondi Wash launched late last year, and the collection is now stocked in Australian and New Zealand stores, and available online. The products are non-toxic, biodegradable and, importantly, effective. Less well-known scents like lemon tea tree, Sydney peppermint and Tasmanian pepper feature in reviving hand, floor, body and dog washes, and bench sprays; hand creams are now in the pipeline.

"A big part of the success of Bondi Wash has been support from locals," says Belinda. "There's a happiness to the people - we're living so close to something so beautiful." Head up to the parents' retreat and the surrounding beauty is on display - the shadow line detail on each of the stairs is a thoughtful touch. On arrival, behold magnificent ocean views in one direction; trees, leaves and district views in another. Look up and the Hive 'Fandango' pendant light dances above the bed in cloud-like playfulness, with the moody photograph of rough seas in the background.

Belinda and Peter have created their own shrine to Australian living. "People often describe our place as being very calm and zen," says Belinda. Whether it's the absence of TV in the living area - "the best thing we ever did" - or the peaceful garden and pool - "landscape designer William Dangar created the most beautiful fragrant garden with frangipani and gardenia", the elegant design allows family life to play out and the persuasive power of tickling the senses washes over every aspect of this soothing home. **10**

For more on Belinda's products, visit bondiwash.com.au. Contact architect Nadine Alwill of Alwill Architecture at alwill.com.au; builder John Oxley at johnoxleyconstructions.com.au; and landscape designer William Dangar at williamdangar.com.au.

LESSONS LEARNT

"What seemed like a major mistake ended up with a better outcome as we were forced to think creatively"

BELINDA EVERINGHAM, OWNER

Biggest lesson: "Pay for quality. Buy the best you can afford for all the big construction elements - flooring, benchtops, windows - but be creative with the design features, like lighting, to save money. You want a house to last a lifetime and to not be replacing and repairing the big bits every few years."

Surprising lesson: "Treat problems as opportunities. What seemed like a major mistake ended up with a better outcome as we were forced to think creatively. For example, the kitchen beams were left exposed and painted white, and that was a cost-cutting feature. It looks fantastic."



3 great finds

1

2

3

BRIGHT ADDITIONS Our partner Zanui will help you give your home a sunny outlook. **1.** Macramé hanging chair, \$89.95. **2.** 'The Aztecs' canvas print, from \$299.95. **3.** Bambury 'Gradient' throw rug, \$29.95. Visit zanui.com.au for more details and options.



COME ON IN! Thanks to Zanui, our editor-in-chief Claire and stylist and author Jason Grant will take you on a tour through this beachside home, and share their styling tips and tricks. For more details and how to buy tickets, turn to page 173.